

ANNUAL REPORT

PIPS - PREGNANCY INFANCY
PARENTING SUPPORT

2021-2022



OUR MISSION

To provide free, non-judgmental, client-focused practical and emotional support during pregnancy and early parenting.

OUR VISION

Individuals and families that are empowered and well supported during pregnancy and the early childhood years.

To work collaboratively with other organisations to enhance each other's work.



CONTENTS

- 4 About Us
- 5 Our Team
- 6 Message from our Chair
- 8 Message from our Manager
- 10 Our Impact
- 11 Your Support
- 12 Our Supporters
- 13 Volunteering at PIPS
- 17 Bumps & Bubs
- 19 Financials



ABOUT US

PIPS – Pregnancy Infancy Parenting Support has been supporting Canterbury families for close to 50 years.

We provide free practical and emotional support during the first 1,000 days of a baby’s life. We firmly believe that every family deserves supported parents, healthy babies and to be connected to their community.

Our open-door policy supports all people who are pregnant and/or parenting including mothers, fathers, grandparents and others, to access free services that are independent of church or government, and support people to make the decisions that are right for them and their family.

By redistributing maternity and baby clothes, equipment and goods, we help to reduce the stress of poverty for mothers and families in the early years. We make sure families have what they need for baby to grow, develop and thrive.

We are more than just a clothing bank. Since 2020, we have redistributed over 100,000 maternity and baby items to families in need.

By reusing and recycling much loved maternity and baby gear, we not only share the joy of parenthood with others, but also have a large environmental impact by diverting these items from landfill.

OUR TEAM

MEGAN TALMAN

Manager

JESS MACKENZIE

Client Services and
Program Coordinator

EMMA JEFFERY

Client Services and
Volunteer Coordinator

OUR BOARD

SUZAYRE BURKE

Chair

KATE BLAIR

Secretary

MELLORA FORD

Treasurer

NICOLA ECCLETON

NEIL BROSNAHAN

MEGAN PERRY

LUCY GREEN

WE WISH TO ACKNOWLEDGE OUR PREVIOUS BOARD
MEMBERS WHO LEFT DURING THE 2021-22 YEAR:

FAYE BATES, MISA KASAI,
ARIANA WILKINS, HAFSA AHMED.

THANK YOU FOR YOUR CONTRIBUTION AND
SUPPORT OF PIPS

MESSAGE FROM OUR CHAIR

SUZAYRE BURKE



It is difficult to summarise the enormity of the last year. Not only did the COVID-19 pandemic creep into another operating year, but it also brought new challenges for our community and PIPS. I am incredibly proud of the resilience and innovation shown by our staff when the majority of services were in lockdown.

The Board and I would like to thank Megan for her leadership and advocacy over the last year. She was pivotal to our Covid response and ensured we provided the best possible service for our clients.

I would also like to thank our dedicated Trust Board. I am eternally grateful for their diverse and enriching perspectives. A special thanks to Nicola Eccleton and Neil Brosnahan for supporting me throughout this year as I navigated the role of Chair.

While demand during the lockdown was high, as restrictions eased, demand for our service continued to grow. I am excited to see the addition and expansion of our services. We received our first Te Whatu Ora Waitaha Canterbury grant, for our new programme NIPS at PIPS, a breast-feeding support service for our clients, and the Manuka Baby beds to trial, so babies can sleep safely.

We could not do what we do without our staff. I would like to acknowledge the significant contribution of Helen Ward for her commitment to our kaupapa. She did a fantastic job supporting our volunteers and ensuring our drop-in centre ran smoothly.

She was integral to the expansion of services to families in the West, with our new outreach pilot. This pilot gave more families access to our weekly drop-in centre in Hornby. It was great to explore the West, but the pilot reassured us that our home is in the East and that families will travel to us because our drop-in service provides more than just practical support, it provides a friendly ear and empowers our clients to come and choose what they need.

It was a heavy loss for the team when she left, I want to thank Helen for the contribution she has made to PIPS, including her continued support since she left.

We also said goodbye to Rachel. It was a privilege to have Rachel as a member of the PIPS whānau for over 6-years and contribute to our programmes, including building and expanding our capsule loan scheme. Thank you both for your dedication.

While it was sad to say goodbye to Helen and Rachel, we are exceptionally lucky to have Emma and Jess join the PIPS family.

As a previous board member with a wealth of governance and consumer advocacy, Emma was well-placed to take on the Client Service Volunteer Coordinator role. Jess brings a wealth of experience in the antenatal, and postnatal supports services and has been doing a great job supporting our clients and managing our programs.

Our service wouldn't be possible without our supporters, those who give their time and those who choose to invest in us. Thank you for enabling us to ease the burden so families/whānau can spend their time with their little ones.

This year a whakataukī has continued to echo in my head, and I shared it with Megan on her one-year anniversary, It described the last year and our ongoing mission and kaupapa.

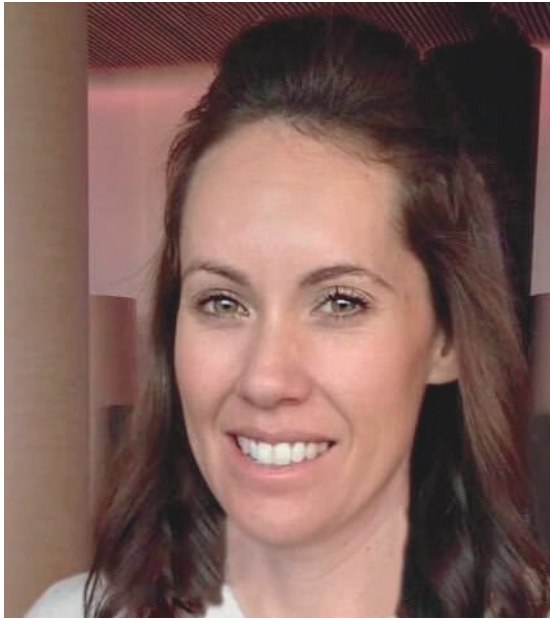
Despite the hurdles and challenges, we strive every day to empower our clients throughout the early years to ultimately improve long-term outcomes for their family/whānau.

Suzayee

Mahia te mahi, hei painga mo te iwi
Do what is needed for the benefit of the people

MESSAGE FROM OUR MANAGER

MEGAN TALMAN



2021/22 - the year of Covid-19 lockdown, masks, mandates and fluctuating Alert Levels.

As I reflect back on the past year, my first at PIPS, I am so proud of all we achieved given such unprecedented challenges.

While many other services were ceasing groups and support, PIPS was able to safely continue our service delivery for pregnant women and their whānau, when they needed it most.

We had our largest year of providing practical assistance, with a whopping 43,000+

maternity and essential baby items being redistributed to vulnerable whānau in Canterbury - over 5,000 more than last year!

Our staff and volunteers welcomed over 650 new clients throughout the year with over 2,500 client contacts recorded.

Our incredible team of volunteers selflessly gave over 1,200 hours to support our work.

I also want to acknowledge and thank our Chair, Suzayre, and Board for their commitment, support and stewardship during these tricky times.

I have been extremely fortunate to work with highly experienced and passionate staff at PIPS. Firstly, with Helen and Rachel, who both made a large impact supporting our clients, and now with our new team, Jess and Emma.

I feel excited about the future at PIPS and look forward to the year ahead!

Megan



CLIENT FEEDBACK

"Pregnancy, postpartum and the early years of a child's life are so intense and important, as we're raising the next generation.

Thanks to PIPS, I feel part of my community. The staff care so much and really see myself and my baby. I'm so grateful for all the courses/education, baby gear and emotional support they provide for free. As migrants to New Zealand, we don't have any support here, but we do have PIPS!"

Fernanda - PIPS Client



OUR IMPACT

In 2021/22, PIPS re-homed over **43,000** maternity and essential baby items with an estimated value of over **\$688,500**.

650 Families supported

2,590 Client Contacts

123 Families attended our groups and courses

7.3 Tonnes of clothing & nursery items saved from landfill

CLIENT FEEDBACK

"It may have only been a small part of your day but it made a massive difference to my confidence, mindset and pregnancy. PIPS has been by far the biggest support throughout my journey to motherhood."

Vicky, PIPS Client



YOUR SUPPORT

Through generous donations we were able to rehome:



46
Bassinets



25,056
Essential Baby Clothes



80
Capsules



1,996
Maternity Items



55
Safe sleep spaces



1,977
Baby Blankets & Sheets



59
Prams



12,638
Toys & Clothing



20
Highchairs



27
Carriers & Nappy Bags



52
Bouncers



23
Pregnancy Tests



959
Cloth & Disposable
Nappy Packs



437
Nursey Items
(baths, change mats etc.)

OUR SUPPORTERS

We would like to thank all the businesses, individuals, funders, networks and groups that have contributed to PIPS over the past year. We are so grateful for all your support, both big and small.



FINANCIAL SUPPORT

Rātā Foundation
Lottery Grants Board
Christchurch City Council
Perpetual Trust
The Philip Brown Fund
Community Organisation Grants Scheme (COGS)
Roy Owen Dixey C.T
Lion Foundation
Air Rescue and Community Services
Pub Charity Grants
William Toomey Trust
Jones Foundation
Catalytic Foundation
Ministry of Women
Christchurch Airport Fund
Christchurch Casino
Strathlachlan Fund
Maurice Carter Trust
The Southern Trust
The Von Burns Charitable Trust, managed by Perpetual Guardian

IN-KIND SUPPORT

Our Management Board
The Concord Lodge 39 Freemasons NZ
Good Bitches Baking
Christchurch Aunties
Days for Girls
Fire and Flood Restoration
Christchurch Police Communications Centre
Our Cuppa Club Supporters + Donors
Pegasus Knitting Group
Whittakers Chocolate
The Period Place
Zoono Global
Delta Community Support Trust
EcoStore
Linden Leaves
Our 'Sit and Stitch' group
All our incredible donors, knitters, sewers, sorters & remaining volunteers



VOLUNTEERING AT PIPS

"As a retired gentleman, volunteering at PIPS has given me purpose again. I really love knowing that I am giving back to my local community and helping to make a difference."

Jan, PIPS Handyman Extraordinaire



OUR VOLUNTEERS

This year, our incredible team of volunteers dedicated over 1,200 hours to sewing, knitting, washing, checking & fixing equipment, sorting clothing, fitting car seats, managing our satellite donation points, Board membership and ensuring our drop-in centre ran smoothly.

We are so grateful to have an amazing community of volunteers. They are central to the success of PIPS and our ability to provide the level of service and support we do.

With a wide range of volunteering roles, there really is a role for anyone looking for ways to give back to their community.

This year, we welcomed our first corporate volunteer group into PIPS. The team from JADE provided some hours fixing and building equipment, sorting clothing and getting through our large pile of cloth nappies! It was a fun morning and we look forward to welcoming more businesses and community groups into PIPS over the coming year.

Our wonderful crafters, including our talented Sit and Stitch ladies, provide an on-going array of beautiful knits and homemade items. It is always such a pleasure to include something brand-new and handmade amongst our preloved items.



We were grateful to be able to continue providing carseat checks and installs over the past 12 months. This service is both an important offering and something that we are very proud to be able to deliver at no-cost to the community. This wouldn't be possible without our amazing carseat technician who so generously donates her time each fortnight (and often more!) to PIPS.

This year one of our volunteers, Fleur, received an award from VOLCAN for her outstanding contribution to PIPS. This was a wonderful opportunity to acknowledge not only Fleur but our entire volunteer team for their dedication and support of PIPS.

If volunteering at PIPS sounds interesting to you, please get in touch. We are always looking for awesome people to join our team!



VOLUNTEER SPOTLIGHT



Mandy is one of our amazing washing volunteers. She generously gives her time to ensure the clothing we pass on is fresh, clean and ready to wear!



"I love working with the families, talking and building relationships with them and mostly supporting them on their journey of parenthood".

Heidi, PIPS Volunteer



Lucille is one of the many wonderful sewing/knitting volunteers who so kindly give up their time to make (and mend!) beautiful clothing for PIPS. We love being able to offer our whānau the opportunity to take something brand-new home.





BUMPS & BUBS

Bumps & Bubs grew to be a popular highlight of the week, especially during the uncertainty of fluctuating Alert Levels. While many other programs ceased operations during this time, PIPS was able to safely continue our delivery and ensured parents had somewhere to go to help reduce the social isolation many were feeling.

Providing a space for parents to safely gather and build much needed social connectedness was incredibly important during this time.

We were also lucky for the continued support from our friends at Good Bitches Baking. Each week, a local baker dropped a box full of amazing cakes, slices, biscuits or other sweet treats for our clients to enjoy over a hot cuppa.

Our Christmas and Mothers' Day events were popular and only possible with the support of local businesses and individuals who so generously donated items. Thank you to everyone who has supported Bumps & Bubs this year!





On average it costs PIPS \$158 to deliver \$514 worth of value for each family assisted by us.

ImpactLab Goodmeasure Report 2021

FINANCIALS



PIPS PREGNANCY INFANCY PARENTING SUPPORT TRUST

Statement of Receipts and Payments (Cash Flows)

For the period 1 July 2021 to 30 June 2022

| | 2022 | 2021 |
|--|--------------------|-------------------|
| | \$NZ | \$NZ |
| Operating Cash Received | | |
| <i>Donations, Fundraising and other similar receipts</i> | | |
| Donations | \$ 7,489 | \$ 7,399 |
| Fundraising | \$ 2,365 | \$ 3,841 |
| Grants (Note 4) | \$ 117,000 | \$ 130,400 |
| <i>Interest</i> | \$ - | \$ - |
| <i>Receipts from Providing Goods and Services</i> | \$ 2,529 | \$ 1,397 |
| Total Operating Cash Received | \$ 129,384 | \$ 143,036 |
| Operating Cash Paid | | |
| <i>Expenses related to public fundraising</i> | \$ 301 | \$ 388 |
| <i>Volunteer and employee-related payments</i> | | |
| Wages, ACC & Salaries | \$ 106,273 | \$ 107,988 |
| Volunteer Appreciation & Expenses | \$ 633 | \$ 553 |
| <i>Expenses related to providing goods or services</i> | | |
| Accountancy Fees & Audit Fee | \$ 2,140 | \$ 1,909 |
| Client Costs | \$ 1,907 | \$ 1,270 |
| Consumables-Baby Equipment | \$ 384 | \$ 14 |
| Travel | \$ 610 | \$ 943 |
| General Expenses | \$ 4,822 | \$ 2,939 |
| Insurance | \$ 706 | \$ 1,356 |
| Office Expenses | \$ 4,786 | \$ 1,320 |
| Rent | \$ 18,100 | \$ 9,277 |
| Staff Training, Supervision & Conferences | \$ 1,985 | \$ 2,833 |
| Telephone & Internet | \$ 1,064 | \$ 523 |
| Total Operating Cash Paid | \$ 143,711 | \$ 131,313 |
| Operating Cash Flow | (\$ 14,327) | \$ 11,723 |
| Capital Cash Applied | | |
| Van purchased (Note 3a) | \$ 5,000 | \$ - |
| Office Equipment (Note 3a) | \$ 39 | \$ - |
| Rent Bond Paid | \$ - | \$ 3,500 |
| Baby Equipment purchased (Note 3a) | \$ 722 | \$ 1,400 |
| Total Capital Cash Applied | \$ 5,761 | \$ 4,900 |
| Capital Cash Flow (Investing/Financing) | (\$ 5,761) | (\$ 4,900) |
| GST Movement | (\$ 3,558) | \$ 2,752 |
| Net Cash Flow | (\$ 23,647) | \$ 9,576 |
| Add Opening Cash Balance | \$ 43,496 | \$ 33,921 |
| Closing Cash Balance | \$ 19,849 | \$ 43,496 |
| Represented by: | | |
| Bank Accounts | \$ 19,218 | \$ 42,943 |
| Cash on Hand | \$ 631 | \$ 553 |
| | \$ 19,849 | \$ 43,496 |

PIPS PREGNANCY INFANCY PARENTING SUPPORT TRUST

Statement of Resources and Commitments (Assets and Liabilities)

As At 30 June 2022

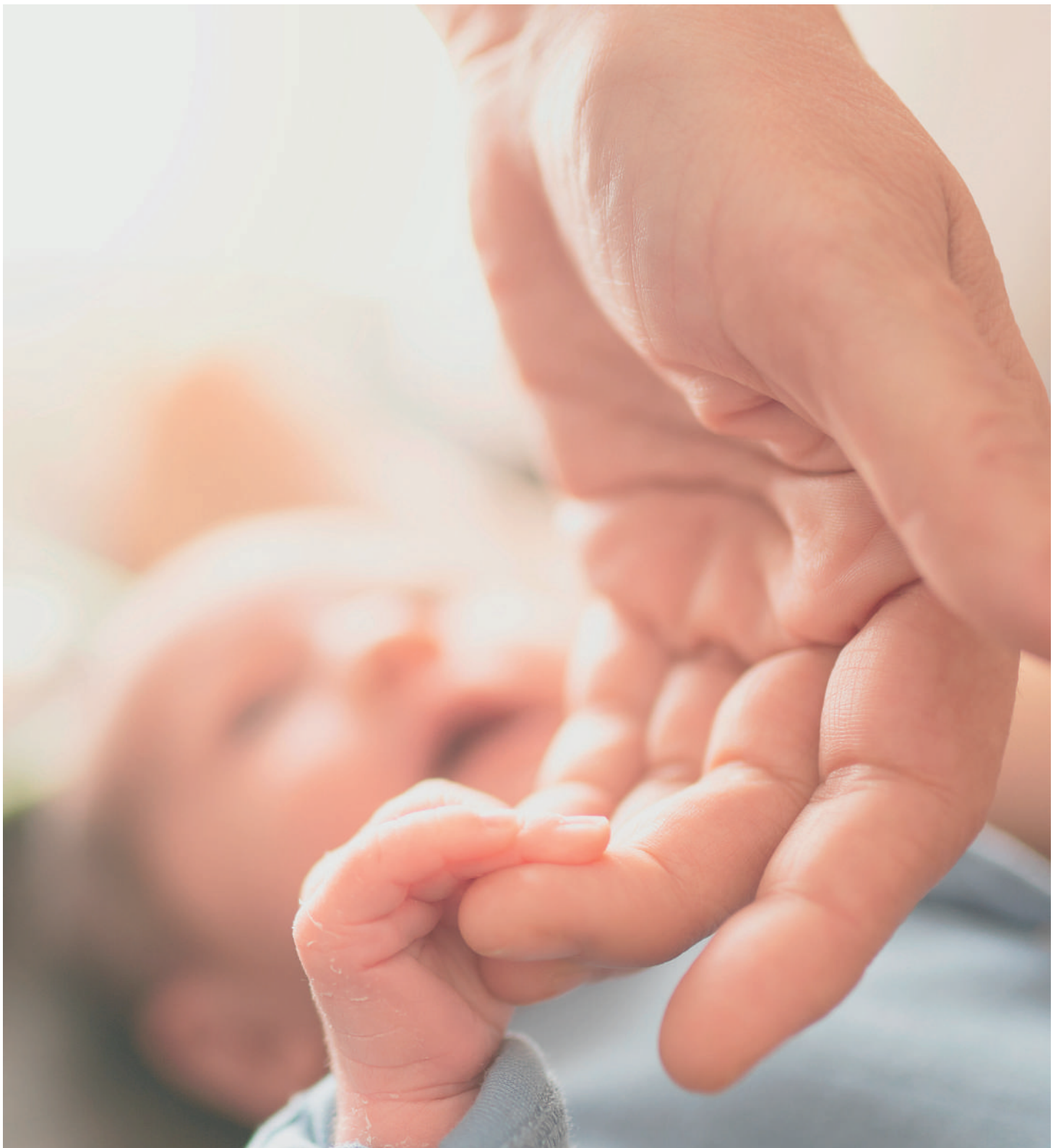
| | | 2022 | 2021 |
|--|-----------|-----------|-----------|
| | | \$NZ | \$NZ |
| Schedule of Resources (Assets) | | | |
| Bank Accounts and Cash | | | |
| Business Account | \$ | 19,218 | \$ 42,943 |
| Cash at Hand | \$ | 631 | \$ 553 |
| Money Owed to the Entity | | | |
| Rent Bond | \$ | 3,500 | \$ 3,500 |
| Pre-paid rent | \$ | - | \$ 3,500 |
| Accounts Receivable | \$ | 230 | \$ 58 |
| GST | \$ | 1,029 | \$ - |
| Other Resources | | | |
| Significant Fixed Assets at Cost | (Note 3a) | \$ 10,689 | \$ 4,928 |
| Lending Equipment Stocktake | (Note 3b) | \$ 10,480 | \$ 13,765 |
| Schedule of Commitments (Liabilities) | | | |
| Money Payable by the Entity | | | |
| Significant Accounts Payable | \$ | 116 | \$ 1,350 |
| Credit Card | \$ | 62 | \$ - |
| GST | \$ | - | \$ 1,622 |
| Other Commitments | | | |
| Holiday Pay Owed to Staff | \$ | 1,907 | \$ 4,619 |
| Equipment Lease | \$ | 966 | \$ 966 |
| Schedule of Other Information | | | |
| Unexpended Grants | (Note 4) | \$ 18,932 | \$ 24,087 |



AGENCY FEEDBACK

"PIPS is a vital service within our community. Having a space where vulnerable whānau can go and choose items for their baby, at no cost, is incredible. By providing choice, PIPS enables empowerment and dignity for our clients. Every baby deserves a safe and equal start to life and PIPS ensures this happens."

Becky, Early Start Project



PIPS - PREGNANCY INFANCY PARENTING SUPPORT

56A SHORTLAND STREET
WAINONI, CHRISTCHURCH

03 385 0556

022 530 2463

www.pips.co.nz

www.facebook.com/PIPSChristchurch

www.instagram.com/pips.nz